

Mortar & Lubricant Pump

Oil hydraulic Type: **PA** SERIES

PA - 3



PA - 3H



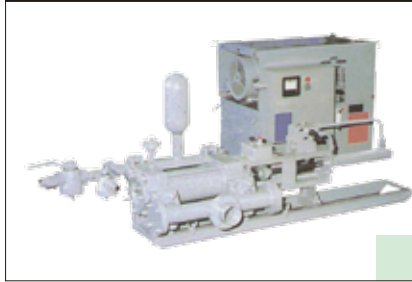
PA - 5



PA - 10



PA - 15C



MODEL	PA - 3	PA - 3H	PA - 5	PA - 10	PA - 15C
Type	Double Acting, Piston Type				
No. of Cylinder	1				
Discharge Volume	58 L/min	65 L/min	100 L/min	211 L/min	353 L/min
Discharge Pressure	1.4 MPa{14kgf-cm ² }	3.0 MPa{30kgf-cm ² }	2.0 MPa{20kgf-cm ² }	1.7 MPa{17kgf-cm ² }	1.3 MPa{13kgf-cm ² }
Piston Diameter	Oil: 50 mm Water: 90 mm	Oil: 50 mm Water: 90 mm	Oil: 50 mm Water: 105 mm	Oil: 70 mm Water: 130 mm	Oil: 60 mm Water: 150 mm
Piston Stroke	150 mm	150 mm	150 mm	200 mm	300 mm
Power	2.2kW/4P	5.5kW/4P	5.5kW/4P	7.5kW/4P	11kW/4P
Dimensions (L × W × H)	Pump: 945 × 360 × 460 mm Oil Unit: 625 × 450 × 600 mm	Pump: 945 × 370 × 460 mm Oil Unit: 625 × 450 × 600 mm	Pump: 950 × 360 × 520 mm Oil Unit: 640 × 450 × 675 mm	Pump: 1300 × 630 × 810 mm Oil Unit: 830 × 690 × 845 mm	Pump: 1820 × 780 × 815 mm Oil Unit: 1040 × 800 × 845 mm
Net Weight	Pump: 80 kg Oil Unit: 170 kg	Pump: 80 kg Oil Unit: 200 kg	Pump: 95 kg Oil Unit: 210 kg	Pump: 215 kg Oil Unit: 300 kg	Pump: 310 kg Oil Unit: 490 kg

PA - 30C



MODEL	PA - 30C	PA - 30C : 3 Speed Oil Unit		
	Standard Oil Unit	Low	Middle	High
Type	Double Acting, Piston Type			
No. of Cylinder	1			
Discharge Volume	540 L/min	90 L/min	220 L/min	320 L/min
Discharge Pressure	1.5 MPa{15kgf-cm ² }	5.4 MPa{55kgf-cm ² }	3.5 MPa{36kgf-cm ² }	2.5 MPa{26kgf-cm ² }
Piston Diameter	Oil: 75 mm Water: 180 mm	Oil: 105 mm Water: 180 mm		
Piston Stroke	400 mm	400 mm		
Power	22 kW/4P	22 kW/4P		
Dimensions (L × W × H)	Pump: 2230 × 1140 × 1040 mm Oil Unit: 1220 × 785 × 1160 mm	Pump: 2230 × 1140 × 1040 mm Oil Unit: 1420 × 1000 × 1400 mm		
Net Weight	Pump: 600 kg Oil Unit: 945 kg	Pump: 600 kg Oil Unit: 1140 kg		