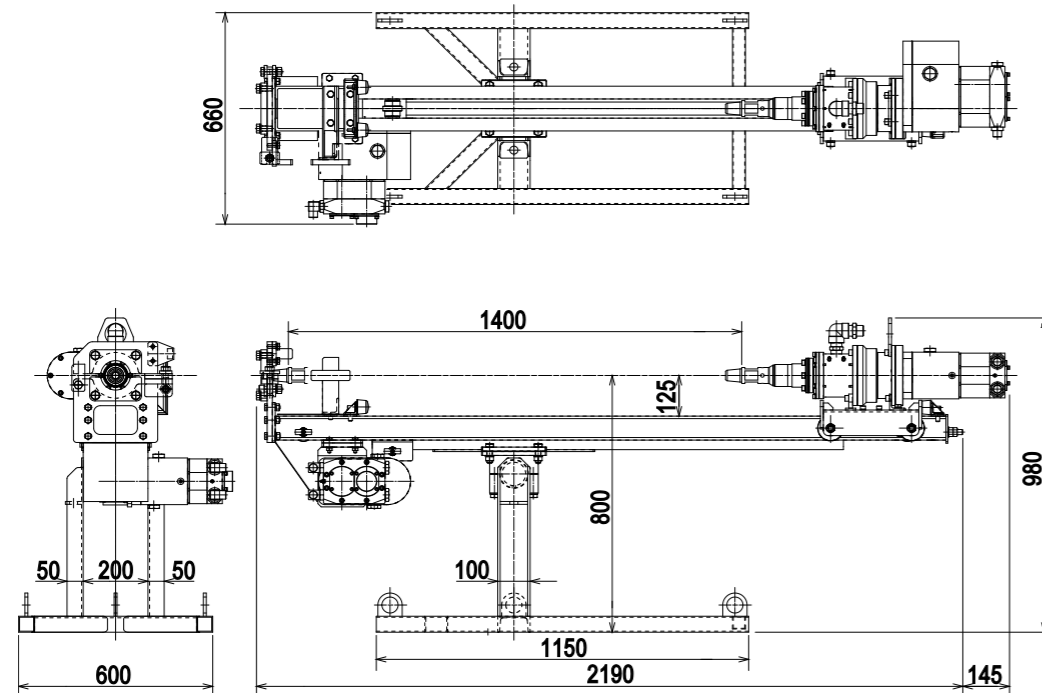


■ GENERAL VIEW



■ SPECIFICATION

| | | |
|-------------------|-------------------------|--|
| Drilling Capacity | | 10 m (Depending on the Soil Condition) |
| Angle Range | | Free |
| Rod Size | Single Tube Type | φ 65 mm |
| | Double Tube Type | φ 106 mm (Min, Inner Diameter φ 67mm) [Inner Rod φ 50mm, Outer Rod φ 89.1mm (Bit Dia. φ 106mm)] |
| Revolving Speed | | 0 ~ 30 rpm |
| Torque (Max.) | | 1.23 kN·m (125kgf·m) |
| Feed | Type | Air Motor / Chain |
| | Thrust Capacity (Max.) | 7.84 kN (800kgf) |
| | Balance Capacity (Max.) | 7.84 kN (800kgf) |
| | Slide Stroke | 1400 mm |
| Air Capacity | | 10~15m ³ /min X 1~1.5MPa |
| Dimension (LXWXH) | | (L) 2190 X (W) 660 X (H) 980 mm |
| Gross Weight | Body | 230kg |
| | Section Weight (Max.) | 65kg |
| | Operation Stand | 65kg |

Option : Ring Bit (94 x 73.1)

※The specification is subject to change without notice.



TOHO CHIKAKOKI CO., LTD.

Tokyo Office

15-8, Higashi-Shinagawa 3-Chome, Shinagawa-ku, Tokyo 140-0002, JAPAN

TEL:81-3-3474-4141 FAX:81-3-3474-4688

Fukuoka Head Office

19-53, Nishitsukiguma 5-Chome, Hakata-ku, Fukuoka 812-0857, JAPAN

TEL:81-92-581-3031 FAX:81-92-582-1277

TOHO drilling equipment Rock Bolt Machine

Lightweight Pneumatic Drilling Machine

AK-01
(Air Kid)



Suitable Machine For Slope Stability

Air Drilling

Reduce running cost using Air Driving Method!

You need air hose plumbing only to start working, so you can save time!

Drill Head with Strong Air Motor

Drill Head with Reduction Gear exerts great drilling torque!

Double Tube Drilling

Double Tube Drilling Method makes it easy to drill into unstable stratum!

TOHO CHIKAKOKI CO., LTD.

Single Tube Type Method (Steep Slope Failure Prevention)
Rock Bolt



Construction Site



Machine Setting up



Machine Setting up



Drilling

Single Tube Type
Hole Diameter : $\phi 65\text{mm}$
Rod Diameter : $\phi 50\text{mm}$

Double Tube Type Method (Rock Bolt)



Drilling



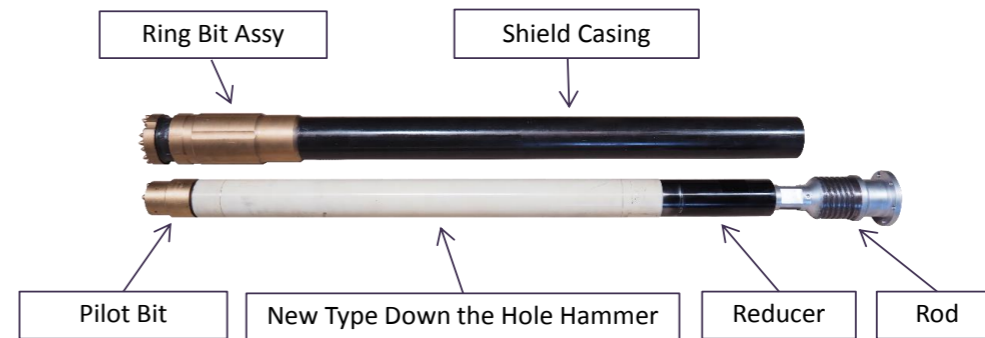
Machine Setting up

Double Tube Type
Hole Diameter : $\phi 106\text{mm}$
Inner Rod Diameter : $\phi 50\text{mm}$
Outer Tube Casing : $\phi 89\text{mm}$
(Outer Tube Casing 3")

TRY THE NEW TYPE HAMMER AND FEEL THE STRONG POWER !

Double Tube Type System

【 Ring Bit (106X89.1) Components】



Setting



**【Air Kid(AK-01) Layout】
Machine and Tubular Scaffolding**

